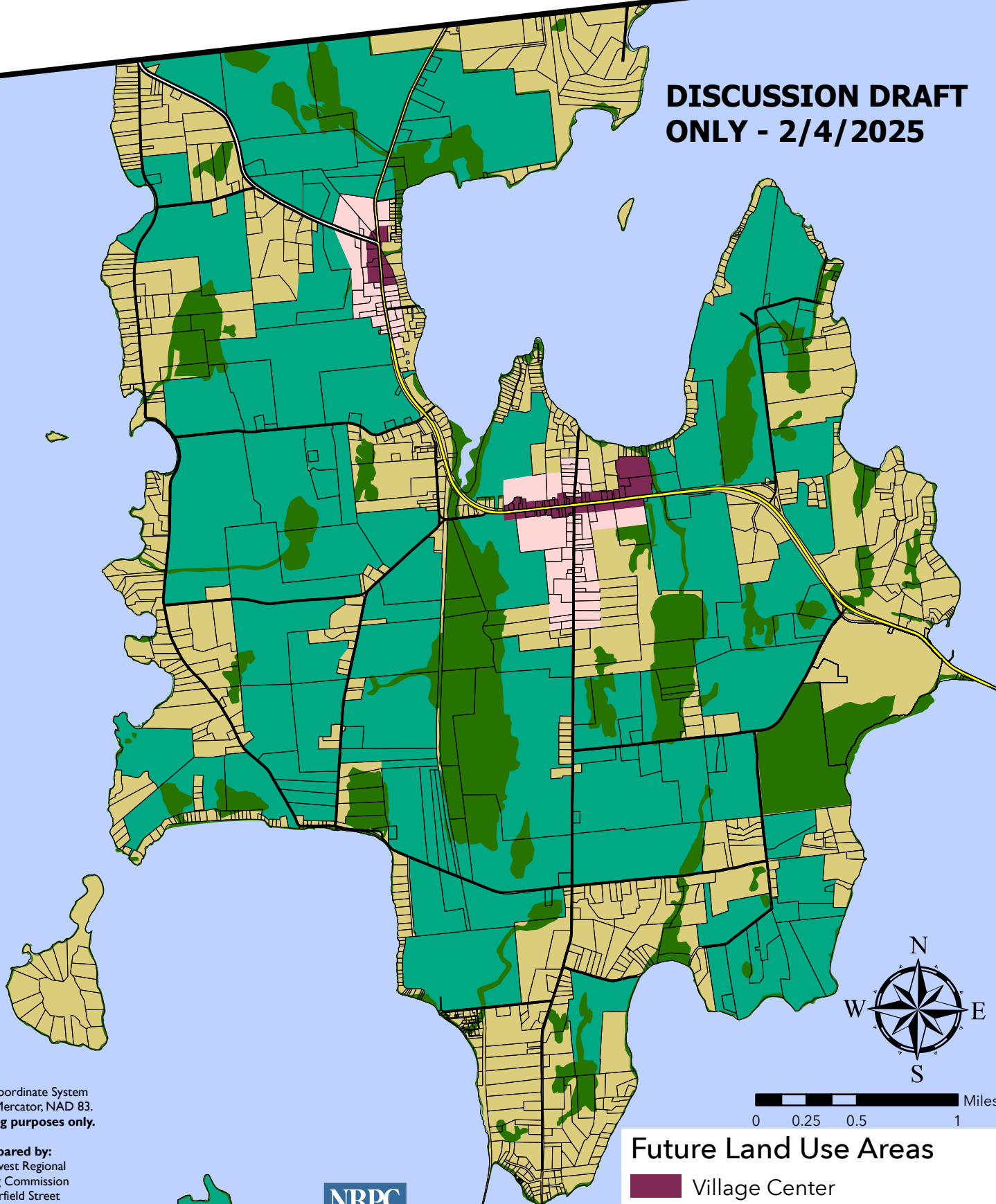


NRPC Draft Future Land Use - South Hero

**DISCUSSION DRAFT
ONLY - 2/4/2025**



Vermont Coordinate System
Transverse Mercator, NAD 83.
For planning purposes only.

Prepared by:
Northwest Regional
Planning Commission
75 Fairfield Street
St. Albans, VT 05478
802.524.5958
www.nrpcvt.com
January 2025.



Location:
z:/nrpc-gis/projects/nrpc/regionalplan/
regionalplan2025/futurelanduse2025.aprx

Future Land Use Areas

- Village Center
- Village Area
- Rural Conservation
- Rural Agriculture and Forestry
- Rural General